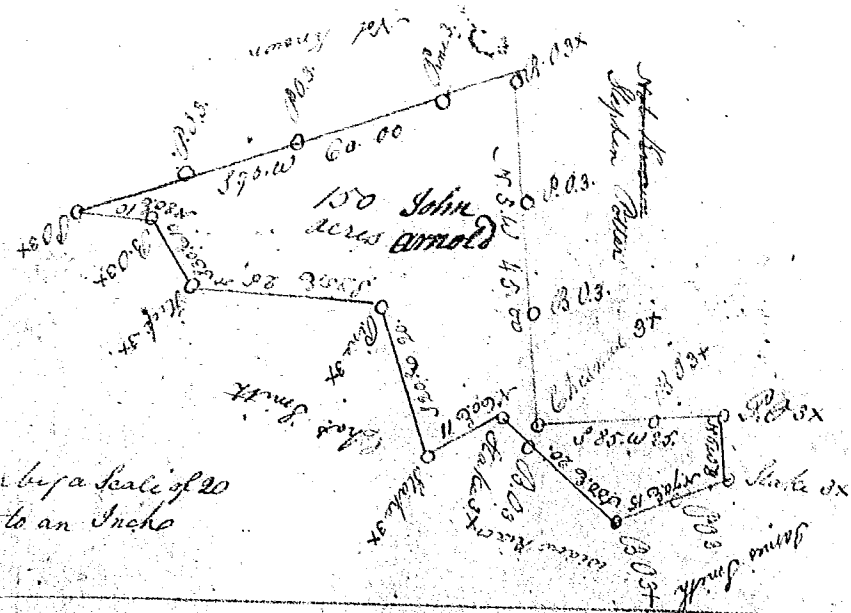
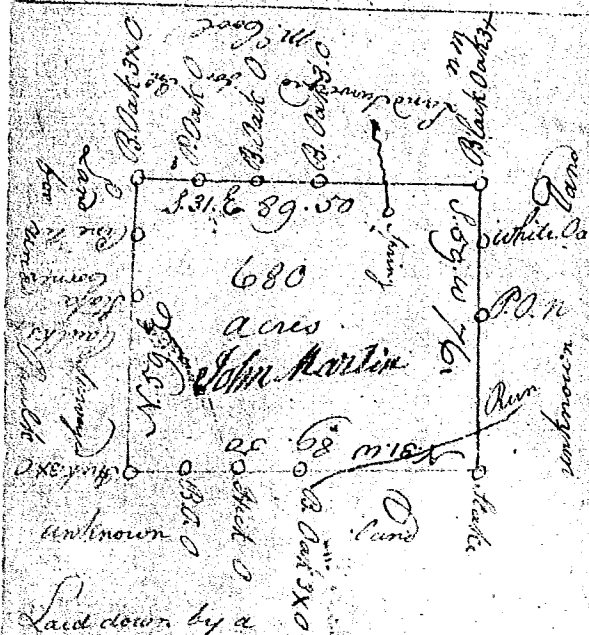


130



Laid down by a scale of 20
Chains to an Acre

S. Carolina } Pursuant to a warrant from John Thomas Esq
 Laurens County } Comr of Locations in the district of Ninety Six N. Saluda
 River and dated the 24th day of Nov. 1791 I have admeasured & laid out
 unto John Arnold a tract of Land containing One hundred & fifty acres
 Situate in said district on the branches of Little River & Reedy fork Creek
 Bounding N. on James Smith, Widow Nixon & Charles Smith. S. on known
 lands on Stephen Potter & hath such form & marks as the above Plat Represents
 Surveyed the 26th day of Nov. 1791
 John Rodgers Ds



Laid down by a
Scale of forty
Chains to an
Acre

State of S. Carolina
 Pursuant to a warrant from John
 Thomas Esq Comr of Locations dated
 the 24th day of Dec. 1791 I have admea-
 sured and laid out unto John Martin
 a tract of Land containing Six hun-
 dred & eighty Acres Situate in the
 district of Ninety Six on the waters
 of Tinkers Creek and Morris's branch
 Bounding by a line Running N. & W.
 & E. by lands Surveyed for Tobias Paulk
 By a line Running S. & E. by lands
 Surveyed for John McCool and all
 other sides on vacant or unknown
 lands and hath such form and marks
 as the above Plat Represents
 Surveyed the 24th day of Dec. 1791
 William Gaston Ds